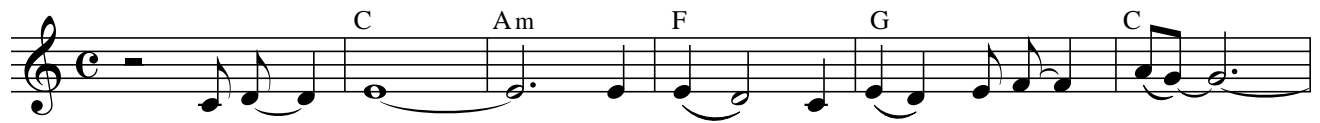


"It is you"

Text: Ernst Reppnig
Musik: Hildegard Stofferin



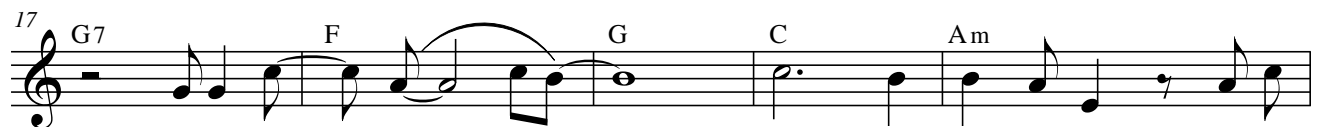
1. It is you who moves the world, it is you



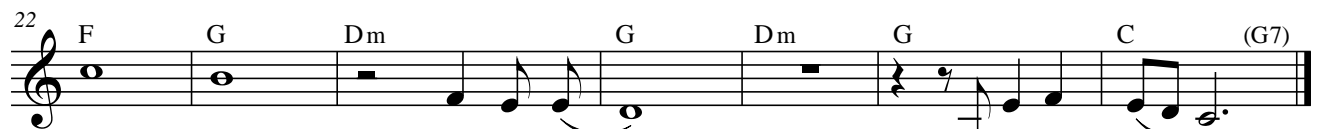
who turns the earth. Don't ride on clouds where an-gels hide their



lone - li - ness, where an - gels hide their lone - li - ness a - way.



Refrain: It's a jun - ction, split the right and wrong, start re -



sump - tion, ne - ver veil, but car-ry on.

2. Sometimes night is full of tears
and it's pride reflects the fears.
But it's you who changes dark into a blissfull,
who changes dark into a blissfull day.

3. Hold it tight your lonely soul,
precious light the devil stole.
But it's you who changes dark into a blissfull,
who changes dark into a blissfull day.

Abfolge: 1. Str., 2. Str., Ref., 3. Str., Ref. (kann am Ende 2x gesungen werden).

"It is you"

Text: Ernst Reppnig
Musik: Hildegard Stofferin

C Am F G C Am

1. It is you _____ who moves the world, it is you _____ who
2. Some-times night _____ is full of tears, and it's pride _____ re -

7 F G Dm G C Am

turns the earth. Don't ride on clouds where an - gels hide their lone-li - ness, where
flects the fears. / But it's you who chan-ges dark in - to a bliss-full, who

13 F G C G7 F G C

an - gels hide their lone-li - ness a - way. Refrain: It's a jun - ction, _____ split the
chan-ges dark in - to a bliss-full day.

20 Am F G Dm G Dm G C (G7)

right and wrong, start re - sump - tion, ne-ver veil, _____ but car-ry on. _____

3. Hold it tight your lonely soul,
precious light the devil stole.
But it's you who changes dark into a blissfull,
who changes dark into a blissfull day.

Abfolge: 1. Str., 2. Str., Ref., 3. Str., Ref. (kann am Ende 2x gesungen werden).